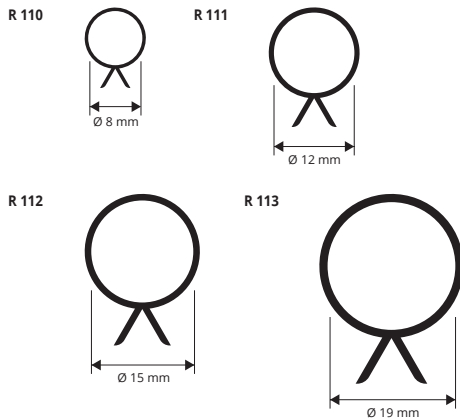


# SNAP-ON STRAND SHEATH

GREY RIGID PVC

The **SNAP-ON PVC STRAND SHEATH** serves to cover/neutralise the reinforcement strands inside the prestressed beams; the sheath cancels out the stress that the strands transmit to the beam, thereby permitting the positive to be changed to left-handed moments. Available in various diameters and lengths.



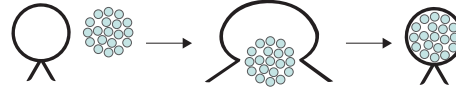
**GREY RIGID PVC**

bar length 3 lm - pack. 50 Pcs - 150 lm

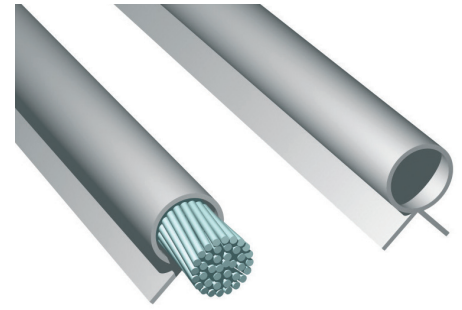
Article	Ø inches	Ø mm
R 110	3 x 3"	8
R 111	3 / 8"	12
R 112	1 / 2"	15
R 113	0' 6"	19

R 110/ 111: 15.000 lm / pallets  
R 112/113: 10.800 lm / pallets

**EXAMPLES AND INSTRUCTIONS FOR LAYING METHODS**

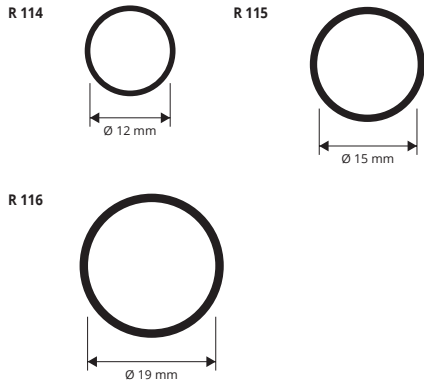


Laying is extremely simple by just positioning the sheath so that the "V" shaped flanges are facing the prestressed reinforcement strands that are already in situ and gently pressing until the sheath snaps on.



# SNAP-ON STRAND TUBE

GREY RIGID PVC



**GREY RIGID PVC**

bar length 3 lm - pack. 50 Pcs - 150 lm

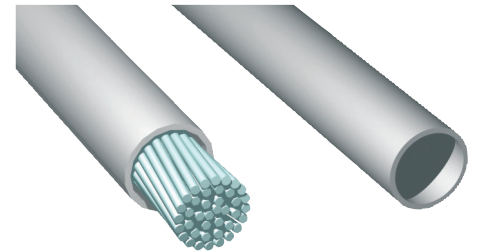
Article	Ø inches	Ø mm
R 114	3/8"	12
R 115	1/2"	15
R 116	0/6"	19

R 114/ 115: 15.000 lm / pallets  
R 116: 12.000 lm / pallets

**COLOURS**



G - Grey

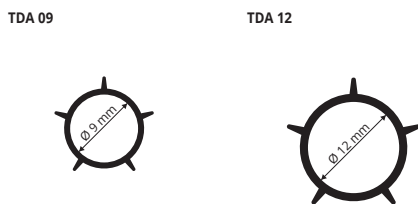


**LAYING INSTRUCTIONS**

Laying is very simple; just insert the casing over the strands before they are tensioned.

# FINNED DISTANCE TUBE

GREY RIGID PVC



**GREY RIGID PVC**

bar length 2 lm - pack. 50 Pcs - 100 lm

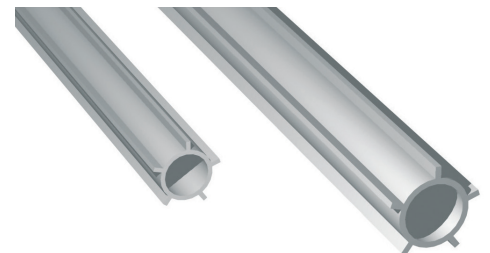
Article	Ø mm
TDA 09	9
TDA 12	12

TDA 09: 15.000 lm / pallets  
TDA 12: 10.000 lm / pallets

**COLOURS**



G - Grey



**LAYING INSTRUCTIONS**

Laying is very simple:  
1. Just insert the iron rod into the finned tube before closing the reinforcement panel. 2. Upon removing the reinforcement panels, if necessary insert the end plugs.

# END CAPS FOR DISTANCE TUBE

GREY HD POLYPROPYLENE



PPT 09 / 12

**SMOOTH END CAPS - GREY HD POLYPROPYLENE**

pack. 1000 Pcs

Article	Ø mm
PPT 09	9
PPT 12	12