

TUBE and **ACCESSORIES** for runners and stair-carpet guides, available in the finishes in polished painted brass, polished gold aluminium and polished chrome aluminium.

TUBES and ACCESSORIES

GOLD AND CHROME POLISHED ALUMINIUM
POLISHED VARNISHED BRASS



BLISTER KIT - 2 TUBES AND 4 TUBE PLUGS - POLISHED BRASS COATED
length tube 0,8 lm - pack. 60 Pcs

Article	Ø mm	
TCTOL 118S	11	*



BLISTER KIT - 2 TUBES and 4 TUBE PLUGS - POLISHED ALUM.
length tube 0,8 lm - pack. 60 Pcs

Article	Ø mm	
TCTBO 128S	12	*

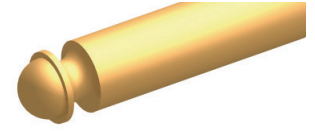
BLISTER KIT - 2 TUBES AND 4 TUBE PLUGS - POLISHED BRASS COATED
length tube 0,9 lm - pack. 60 Pcs

Article	Ø mm	
TCTOL 119S	11	*

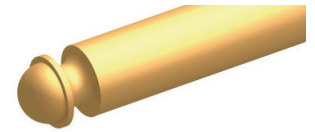
BLISTER KIT - 2 TUBES and 4 TUBE PLUGS - POLISHED ALUM.
length tube 0,9 lm - pack. 60 Pcs

Article	Ø mm	
TCTBO 129S	12	*

TCTOL 11/13S



TCTBO 12S



TCTBC 12S



tube and accessories for stairs

Varnished polished brass is not suitable for places subject to heavy foot-traffic and / or abrasion.

COLOURS



TUBE for runners and stair-carpet guides

GOLD AND CHROME POLISHED ALUMINIUM, POLISHED VARNISHED BRASS

POLISHED BRASS COATED
bar length 2 lm - pack. 40 Pcs - 80 lm

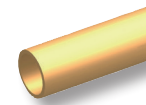
Article	Ø mm	
TGSOL 112	11	
TGSOL 132	13	

For different size bars, contact the sales office.

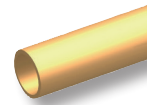
POLISHED ALUMINIUM
bar length 2 lm - pack. 40 Pcs - 80 lm

Article	Ø mm	
TGSBO 122	12	
TGSBC 122	12	

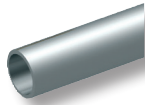
TGSOL 11/13



TGSBO 12



TGSBC 12



TUBE PLUGS/END CAPS for tube

POLISHED BRASS AND CHROMED BRASS

POLISHED BRASS AND CHROMED BRASS - pack. 60 Pcs

Article	Ø mm	
TETOL 11	11	
TETOC 12	12	
TETOL 12	12	
TETOL 13	13	

TETOL 11
TETOL 12
TETOL 13



TETOC 12



SUPPORT / EYELET for tube with screw

POLISHED BRASS AND CHROMED BRASS

POLISHED BRASS AND CHROMED BRASS - pack. 20 Pcs

Article	Ø mm	
SOOL 12	12	
SOOC 12	12	
SOOL 14	14	

SOOL 12
SOOL 14



SOOC 12



HINGE SUPPORT for tube

POLISHED BRASS

POLISHED BRASS - pack. 20 Pcs

Article	Ø mm	
SCOL 11	11	
SCOL 13	13	

Articles without bar code.
For bar code add the letter "C" after the article code. E.g.: SCOL 11C

SCOL 11
SCOL 13



* = Production on demand with minimum quantity of 200 pcs. Production delay 4/5 weeks. Price to be agreed