

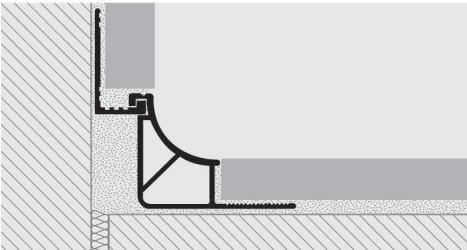
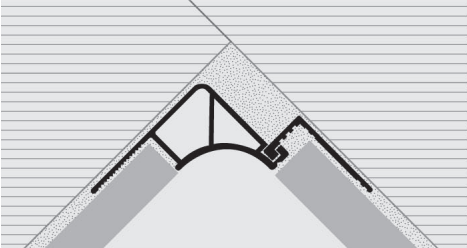
PROSGUSCIO DA is a cove-shaped profile in shockproof non-toxic coloured vinyl resin particularly suitable to ensure cleanliness and hygiene in public and industrial environments. Its particular section, the availability in three finishes, four heights and special pieces, such as internal and external corners, end caps and junctions, make **PROSGUSCIO DA** a much sought-after profile that allows a workmanlike application.

PROSGUSCIO DA

SHOCKPROOF NON - TOXIC COLOURED VINYL RESIN



EXAMPLES AND INSTRUCTIONS FOR LAYING METHODS



1. Choose "PROSGUSCIO DA" according to the tile thickness and desired colour.
2. Cut "PROSGUSCIO DA" to the desired length and apply the adhesive on the support where the profile will be laid.
3. Press the anchoring flange of "PROSGUSCIO DA" into the adhesive.
4. Lay the tiles on floor and wall aligning them with the profile leaving a 2 mm joint.
5. Fill the joints between the profile and the tiles with grout, in order to avoid water stagnation.

NON-TOXIC SHOCKPROOF VINYL RESIN

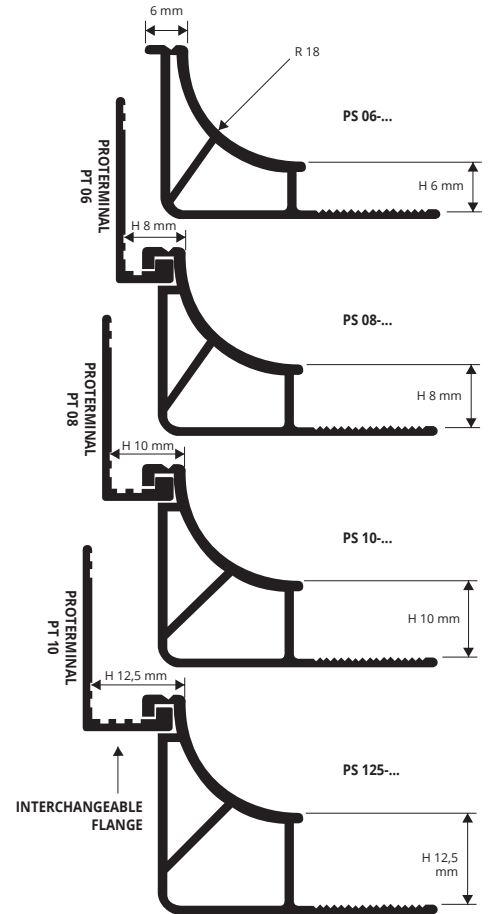
bar length 2,5 lm - pack. 20 Pcs - 50 lm

Article	H mm
PS 06...	6
PS 08...	8
PS 10...	10
PS 125...	12,5

H 06 available in the colours: 01-04.
 H 08, H 10 and H 125 available in the colours: 01-03-04.
 The code of the selected colour must be added to the article code.
 E.g.: PS 06... (chosen colour white) PS 06-01. The interchangeable flange corresponds to white Proterminal pvc H 6-8-10 mm.

COLOURS

01 - White	03 - Cement gray	04 - Light Beige
------------	------------------	------------------



BUY WHITE PROTERMINAL TO CREATE THE DUAL HEIGHT:
 Use proterminal PT 06 to reach H 8 mm
 Use proterminal PT 08 to reach H 10 mm
 Use proterminal PT 10 to reach H 12,5 mm

CORNERS, END CAPS and JOINTS

NON- TOXIC VINYL RESIN - 3 COLOURS

EXTERNAL / INTERNAL CORNER - RVA COLOURED

Article	H mm
RAI ...-.../...	06/08/10/125
RAE ...-.../...	06/08/10/125

Available in the colours: 01 - 03 - 04.
 The code of the selected colour must be added to the article code.
 E.g.: RAI 06-... (chosen colour white) RAI 06-01.

Choose the desired packaging. Ex. RAI 06-01/10 (pack. 10 Pcs)
 RAI 06-01/2 (pack. 2 Pcs)

END CAP RT / LF - RVA COLOURED

pack. 10 Pcs (5 right and 5 left) - pack. 2 Pcs (1 right and 1 left)

Article	H mm
TCE 06-.../...	06/08/10/125

Available in the colours: 01 - 03 - 04.
 The code of the selected colour must be added to the article code.
 E.g.: TCE 08-... (chosen colour white) TCE 08-01.
 Choose the desired packaging. Ex. TCE 08-01/5 (pack. 10 Pcs)
 TCE 08-01/1 (pack. 2 Pcs)

JOINTS - RVA COLOURED

pack. 10 Pcs - pack. 2 Pcs

Article	H mm
GIN ...-.../...	06/08/10/125

Available in the colours: 01 - 03 - 04.
 The code of the selected colour must be added to the article code.
 E.g.: GIN 08-... (chosen colour white) GIN 08-01.

Choose the desired packaging. Ex. GIN 08-01/10 (pack. 10 Pcs)
 GIN 08-01/2 (pack. 2 Pcs)

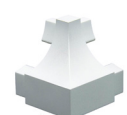


PROJOLLY - PROJOLLY QUART

INTERNAL CORNER
RAI...-.../...



EXTERNAL CORNER
RAE...-.../...



END CAP
TCE...-.../...



JOINT
GIN...-.../...

