

PROLISTEL CHANNEL is a F-shaped strip in stone line varnished aluminium suitable to decorate the wall coverings in ceramic tiles and natural stones. Its section allows the realization of a decorative joint which can also be used as a guide for the fixing of sheets of glass on floors and walls. Its particular section and the availability in 16 different finishes make **PROLISTEL CHANNEL** a much sought-after profile that allows an easy workmanlike application.

PROLISTEL CHANNEL

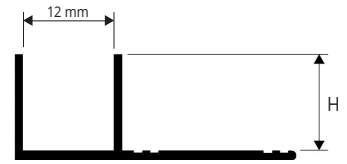
STONE LINE VARNISHED ALUMINIUM



STONE LINE VARNISHED ALUMINIUM
bar length 2,7 lm - pack. 40 Pcs - 108 lm

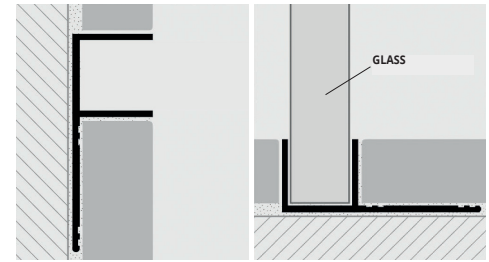
Article	H mm		
PLTCHA 08-SL..	8		
PLTCHA 10-SL..	10		
PLTCHA 11-SL..	11		
PLTCHA 125-SL..	12,5		

PLTCHA 08/10/11/12,5 - SL...
scale 1:1



EXAMPLES AND INSTRUCTIONS FOR LAYING METHODS

1. Choose "PROLISTEL CHANNEL" according to the visible surface and desired finish. 2. Cut "PROLISTEL CHANNEL" to the desired length and apply the adhesive on the surface where the profile will be laid. 3. Press "PROLISTEL CHANNEL" into the adhesive, aligning it with the tiles leaving a 2 mm. joint. Remove immediately all remains of adhesive from the surface of the profile. 4. Fill the joint between the profile and tiles with grout in order to avoid water stagnation. Remove immediately all the remains of grout from the surface of the profile.



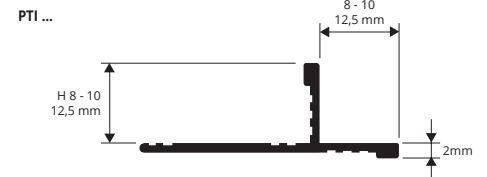
STONE LINE

SL01 - Stone white	SL02 - Stone cream	ON DEMAND	SL03 - Stone greyvory	SL04 - Stone sand	ON DEMAND	ON DEMAND	ON DEMAND	ON DEMAND	ON DEMAND
ON DEMAND	ON DEMAND	ON DEMAND	ON DEMAND	ON DEMAND	ON DEMAND				
SL13 - Stone oyster grey	SL14 - Stone taupe grey	SL15 - Stone grey smoke	SL16 - Stone grey gun	SL17 - Stone tobacco	SL18 - Stone white cement				

PROTERMINAL INT is a profile in anodized and polished aluminium that can be applied on external corners of coverings. It can be used to close the perimeter of coverings and like a connection profile between step tread and riser of stairs coated with ceramic or natural stone tiles. Its particular section and the availability in four different finishes make **PROTERMINAL INT** a much sought-after profile that allows an elegant workmanlike application.

PROTERMINAL INT

ANODIZED AND POLISHED ALUMINIUM



ANODIZED ALUMINIUM (silver - titanium) thermo packed
bar length 2,7 lm - pack. 40 Pcs - 108 lm

Article	H mm		
PTIAA 08	8		
PTIAA 10	10		
PTIAA 125	12,5		
PTIAT 08	8		
PTIAT 10	10		
PTIAT 125	12,5		

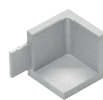
POLISHED ALUMINIUM (chrome - titanium) thermo packed
bar length 2,7 lm - pack. 40 Pcs - 108 lm

Article	H mm		
PTIBC 08	8		
PTIBC 10	10		
PTIBC 125	12,5		
PTIBT 08	8		
PTIBT 10	10		
PTIBT 125	12,5		

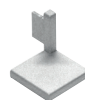
INTERNAL, EXTERNAL, THREE-WAYS JOINTS
ANODIZED POLISHED ALUMINIUM - pack. 3 Pcs

Article		
RIPTI ... 08 - 10 - 125/3		
REPTI ... 08 - 10 - 125/3		
RTPIT ... 08 - 10 - 125/3		

INTERNAL CORNER
RIPTI ... 08 - 10 - 125



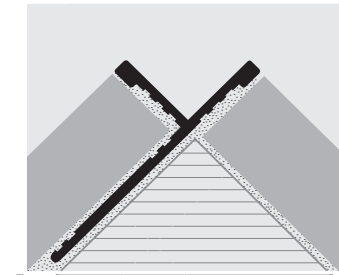
EXTERNAL CORNER
REPTI ... 08 - 10 - 125



3 WAYS JOINT
RTPIT ... 08 - 10 - 125



EXAMPLES AND INSTRUCTIONS FOR LAYING METHODS



1. Choose "PROTERMINAL INT" according to the tile thickness and desired finish. 2. Cut "PROTERMINAL INT" to the desired length and apply the adhesive on the support where the profile will be laid. 3. Press the anchoring flange of "PROTERMINAL INT" into the adhesive. 4. Lay the tiles, aligning them with the profile leaving a 2 mm joint. Remove immediately all remains of adhesive from the surface of the profile. 5. Fill the joints between the profile and the tiles with grout, in order to avoid water stagnation. Remove immediately all the remains of grout from the surface of the profile.

COLOURS

ANODIZED		POLISHED	
AA - Anodized silver alum.	AT - Anodized titanium alum.	BC - Polished chrome alum.	BT - Polished titanium alum.

On demand may be realised in other finishes of the colour chart. Contact our customer service for minimal quantity, timing and price.