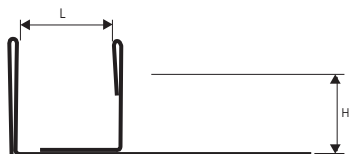


PROLISTEL CHANNEL

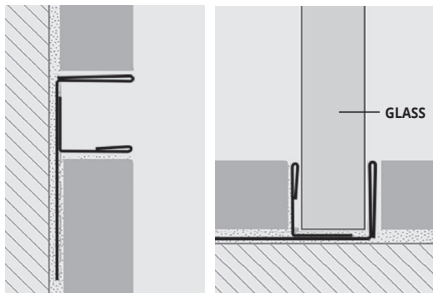
STAINLESS STEEL AISI 304/1.4301-V2A

PROLISTEL CHANNEL is a F-shaped strip in satin-finish stainless steel AISI 304/1.4301-V2A suitable to decorate the wall coverings in ceramic tiles and natural stones. Its section allows the realization of a decorative joint which can also be used as a guide for the fixing of sheets of glass on floors and walls. Its particular section and the availability in two different finishes make **PROLISTEL CHANNEL** a much sought-after profile that allows an easy workmanlike application.

PLTCH... 08 - 10 - 11 - 12,5



EXAMPLES AND INSTRUCTIONS FOR LAYING METHODS



1. Choose "PROLISTEL CHANNEL" according to the visible surface and desired finish.
2. Cut "PROLISTEL CHANNEL" to the desired length and apply the adhesive on the surface where the profile will be laid.
3. Press "PROLISTEL CHANNEL" into the adhesive, aligning it with the tiles leaving a 2 mm. joint. Remove immediately all remains of adhesive from the surface of the profile.
4. Fill the joint between the profile and tiles with grout in order to avoid water stagnation. Remove immediately all the remains of grout from the surface of the profile.



SATIN-FINISH STAINLESS STEEL AISI 304/1.4301-V2A

bar length 2,7 lm - pack. 1 Pc

Article	H mm	L mm
PLTCHACS 0808	8	08
PLTCHACS 1008	10	08
PLTCHACS 1108	11	08
PLTCHACS 12508	12,5	08

SATIN-FINISH STAINLESS STEEL AISI 304/1.4301-V2A

bar length 2,7 lm - pack. 1 Pc

Article	H mm	L mm
PLTCHACS 0812	8	12
PLTCHACS 1012	10	12
PLTCHACS 1112	11	12
PLTCHACS 12512	12,5	12



SATIN-FINISH STAINLESS STEEL AISI 304/1.4301-V2A

bar length 2,7 lm - pack. 1 Pc

Article	H mm	L mm
PLTCHACS 0810	8	10
PLTCHACS 1010	10	10
PLTCHACS 1110	11	10
PLTCHACS 12510	12,5	10

COLOURS



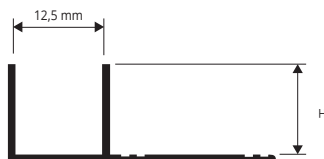
ACS - Brushed stainless steel AISI 304/1.4301-V2A

PROLISTEL CHANNEL

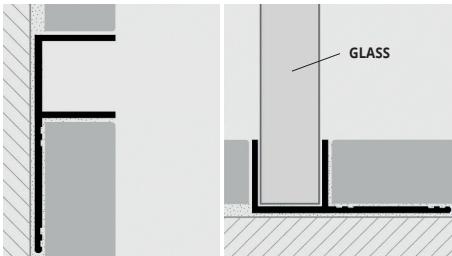
ANODIZED AND POLISHED ALUMINIUM

PROLISTEL CHANNEL is a F-shaped strip in anodized and polished aluminum suitable to decorate the wall coverings in ceramic tiles and natural stones. Its section allows the realization of a decorative joint which can also be used as a guide for the fixing of sheets of glass on floors and walls. Its particular section and the availability in two different finishes make **PROLISTEL CHANNEL** a much sought-after profile that allows an easy workmanlike application.

PLTCH... 08 - 10 - 11 - 12,5



EXAMPLES AND INSTRUCTIONS FOR LAYING METHODS



1. Scegliere "PROLISTEL CHANNEL" in funzione della superficie a vista e della finitura desiderata.
2. Tagliare "PROLISTEL CHANNEL" della lunghezza desiderata ed applicare l'adesivo sul supporto dove sarà applicato il listello.
3. Premere "PROLISTEL CHANNEL" nell'adesivo avendo cura di allinearne i bordi con la superficie del rivestimento e di lasciare una fuga di circa 2 mm. Rimuovere immediatamente residui di adesivo dalla superficie del profilo.
4. Stuccare accuratamente le fughe tra profilo e piastrella onde evitare il ristagno di eventuale acqua. Rimuovere immediatamente residui di stucco dalla superficie del profilo.



ANODIZED SILVER ALUMINIUM

bar length 2,7 lm - pack. 40 Pcs - 108 lm

Article	H mm
PLTCHAA 08	8
PLTCHAA 10	10
PLTCHAA 11	11
PLTCHAA 125	12,5

COLOURS

ANODIZED	POLISHED
AA - Anodized silver alum.	BC - Polished chrome alum.

ON DEMAND

ANODIZED
NE - Anodized black alum.



POLISHED CHROME ALUMINIUM

bar length 2,7 lm - pack. 40 Pcs - 108 lm

Article	H mm
PLTCHBC 08	8
PLTCHBC 10	10
PLTCHBC 11	11
PLTCHBC 125	12,5

ANODIZED BLACK ALUMINIUM

bar length 2,7 lm - pack. 40 Pcs - 108 lm

Article	H mm
PLTCHNE 08	8
PLTCHNE 10	10
PLTCHNE 11	11
PLTCHNE 125	12,5

= News 2024

= Production on demand with minimum quantity of 100 pcs. Production delay 4/5 weeks. Price to be agreed

PROLISTEL CHANNEL is a F-shaped strip in stone line varnished aluminium suitable to decorate the wall coverings in ceramic tiles and natural stones. Its section allows the realization of a decorative joint which can also be used as a guide for the fixing of sheets of glass on floors and walls. Its particular section and the availability in 16 different finishes make **PROLISTEL CHANNEL** a much sought-after profile that allows an easy workmanlike application.

PROLISTEL CHANNEL

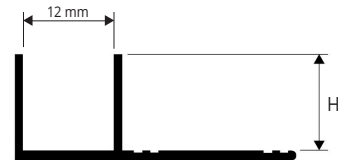
STONE LINE VARNISHED ALUMINIUM



STONE LINE VARNISHED ALUMINIUM
bar length 2,7 lm - pack. 40 Pcs - 108 lm

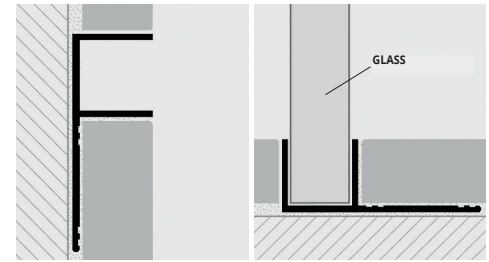
Article	H mm		
PLTCHA 08-SL..	8		
PLTCHA 10-SL..	10		
PLTCHA 11-SL..	11		
PLTCHA 125-SL..	12,5		

PLTCHA 08/10/11/12,5 - SL...
scale 1:1



EXAMPLES AND INSTRUCTIONS FOR LAYING METHODS

1. Choose "PROLISTEL CHANNEL" according to the visible surface and desired finish. 2. Cut "PROLISTEL CHANNEL" to the desired length and apply the adhesive on the surface where the profile will be laid. 3. Press "PROLISTEL CHANNEL" into the adhesive, aligning it with the tiles leaving a 2 mm. joint. Remove immediately all remains of adhesive from the surface of the profile. 4. Fill the joint between the profile and tiles with grout in order to avoid water stagnation. Remove immediately all the remains of grout from the surface of the profile.



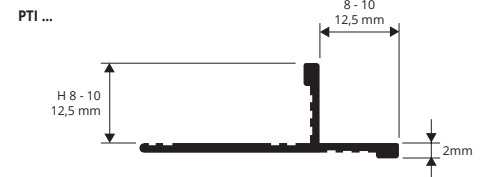
STONE LINE

SL01 - Stone white	SL02 - Stone cream	ON DEMAND	SL03 - Stone greyvory	SL04 - Stone sand	SL05 - Stone gray	ON DEMAND	ON DEMAND	ON DEMAND	ON DEMAND	ON DEMAND
ON DEMAND	ON DEMAND	ON DEMAND	ON DEMAND	ON DEMAND	ON DEMAND	ON DEMAND				
SL13 - Stone oyster grey	SL14 - Stone taupe grey	SL15 - Stone grey smoke	SL16 - Stone grey gun	SL17 - Stone tobacco	SL18 - Stone white cement					

PROTERMINAL INT is a profile in anodized and polished aluminium that can be applied on external corners of coverings. It can be used to close the perimeter of coverings and like a connection profile between step tread and riser of stairs coated with ceramic or natural stone tiles. Its particular section and the availability in four different finishes make **PROTERMINAL INT** a much sought-after profile that allows an elegant workmanlike application.

PROTERMINAL INT

ANODIZED AND POLISHED ALUMINIUM



ANODIZED ALUMINIUM (silver - titanium) thermo packed
bar length 2,7 lm - pack. 40 Pcs - 108 lm

Article	H mm		
PTIAA 08	8		
PTIAA 10	10		
PTIAA 125	12,5		
PTIAT 08	8		
PTIAT 10	10		
PTIAT 125	12,5		

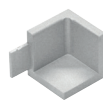
POLISHED ALUMINIUM (chrome - titanium) thermo packed
bar length 2,7 lm - pack. 40 Pcs - 108 lm

Article	H mm		
PTIBC 08	8		
PTIBC 10	10		
PTIBC 125	12,5		
PTIBT 08	8		
PTIBT 10	10		
PTIBT 125	12,5		

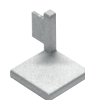
INTERNAL, EXTERNAL, THREE-WAYS JOINTS
ANODIZED POLISHED ALUMINIUM - pack. 3 Pcs

Article		
RIPTI ... 08 - 10 - 125/3		
REPTI ... 08 - 10 - 125/3		
RTPIT ... 08 - 10 - 125/3		

INTERNAL CORNER
RIPTI ... 08 - 10 - 125



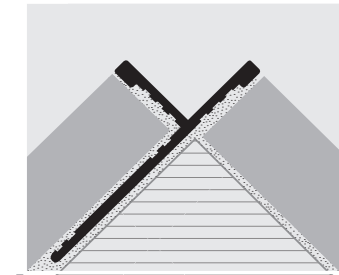
EXTERNAL CORNER
REPTI ... 08 - 10 - 125



3 WAYS JOINT
RTPIT ... 08 - 10 - 125



EXAMPLES AND INSTRUCTIONS FOR LAYING METHODS



1. Choose "PROTERMINAL INT" according to the tile thickness and desired finish. 2. Cut "PROTERMINAL INT" to the desired length and apply the adhesive on the support where the profile will be laid. 3. Press the anchoring flange of "PROTERMINAL INT" into the adhesive. 4. Lay the tiles, aligning them with the profile leaving a 2 mm joint. Remove immediately all remains of adhesive from the surface of the profile. 5. Fill the joints between the profile and the tiles with grout, in order to avoid water stagnation. Remove immediately all the remains of grout from the surface of the profile.

COLOURS

ANODIZED		POLISHED	
AA - Anodized silver alum.	AT - Anodized titanium alum.	BC - Polished chrome alum.	BT - Polished titanium alum.

On demand may be realised in other finishes of the colour chart. Contact our customer service for minimal quantity, timing and price.