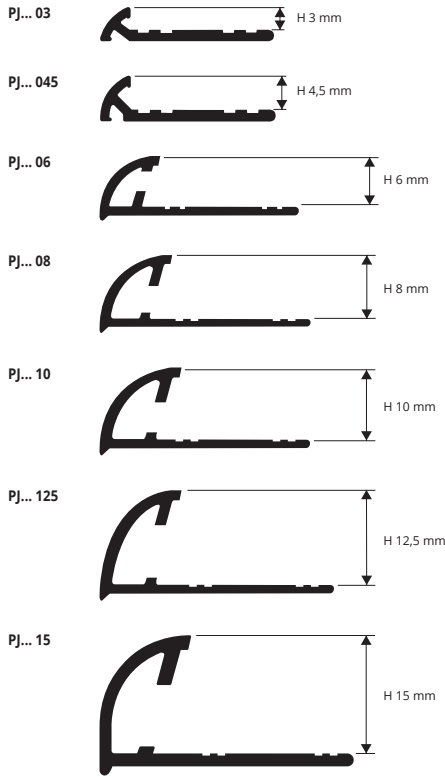


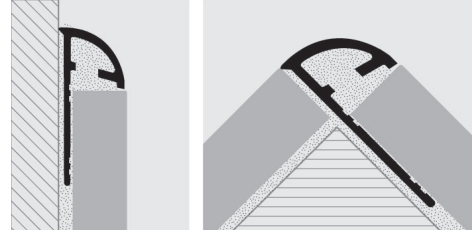
# PROJOLLY

ANODIZED ALUMINIUM  
SILVER, TITANIUM

**PROJOLLY** is a rounded bead profile in anodized aluminium that can be applied on external corners of coverings. It can be used to close the perimeter of coverings and like a connection profile between step tread and riser of stairs coated with ceramic or natural stone tiles. Its particular section and elegance, the availability in five different finishes and special pieces such as internal and external corners, end caps and joints make **PROJOLLY** a much sought-after and elegant profile that allows a workmanlike application.



## EXAMPLES AND INSTRUCTIONS FOR LAYING METHODS



1. Choose "PROJOLLY" according to the tile thickness and desired finish.
2. Cut "PROJOLLY" to the desired length and apply the adhesive on the support where the profile will be laid.
3. Press the anchoring flange of "PROJOLLY" into the adhesive.
4. Lay the tiles, aligning them with the profile leaving a 2 mm joint. Remove immediately all remains of adhesive from the surface of the profile.
5. Fill the joints between the profile and the tiles with grout, in order to avoid water stagnation. Remove immediately all the remains of grout from the surface of the profile.

**ANODIZED ALUM.** (silver-copper-gold-titanium-black) thermo packed bar length 2,7 lm - pack. 40 Pcs - 108 lm (for H 15 anodized silver alum. pack. 20 Pcs - 54 lm)

Article	H mm
PJAA 03	3
PJAA 045	4,5
PJAA 06	6
PJAA 08	8
PJAA 10	10
PJAA 125	12,5
PJAA 15	15
PJAT 08	8
PJAT 10	10
PJAT 125	12,5

## COLOURS



ITEM AVAILABLE WHILE STOCKS LAST.

# CAPSULES, END CAPS and THREE-WAYS JOINTS

\* Capsules & end caps of the on demand profiles are also on demand

Anodized ALUMINIUM (silver, copper, titanium, gold and black) / PLASTIC

## LEFT CAPSULES ANODIZED ALUMINIUM

(silver, copper, titanium and gold)

Article	H mm
CPJAA .../...	06/08/10/125
CPJAA 15/...	15
IPJAA .../...	06/08/10/125
IPJAA 15/...	15
TPJAA .../...	06/08/10/125/15
CPJAT .../...	08/10/125
IPJAT .../...	08/10/125
TPJAT .../...	08/10/125

Choose the desired pack. & height  
Ex.: 4,5 mm capsule in 10 Pcs Pack - CPJAA 10/10

## JOINTS - PLASTIC

Article	H mm
GIJA .../...	06/08/10/125/15

Choose the desired pack. & height  
Ex.: 10 mm joint in 10 Pcs Pack - GIJA 10/10

### EXTERNAL CAPSULES



### INTERNAL CAPSULES



### CAPS



TPJ... ..

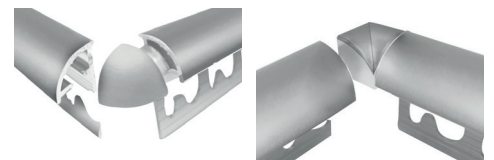
### JOINTS



GIJA .../...

The right capsules are available on demand and must be used only in the following cases:

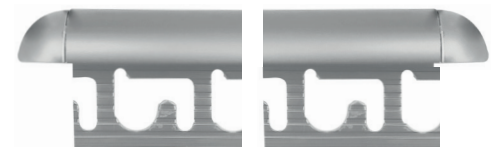
A) when you are laying the cut base of the profile perpendicularly on the floor;



Add "D" to the article code. For example: CPJDAA 06.

Add "D" to the article code. For example: IPJDAA 06.

B) as an alternative to end-caps (right side).



LEFT CAPSULES

RIGHT CAPSULES

Add "D" to the article code. For example: CPJDAA 06.

\* = Production on demand with minimum quantity of 100 pcs. Production delay 4/5 weeks. Price to be agreed

**PROJOLLY** is a rounded bead profile in polished aluminium that can be applied on external corners of coverings. It can be used to close the perimeter of coverings and like a connection profile between step tread and riser of stairs coated with ceramic or natural stone tiles. Its particular section and elegance, the availability in five different finishes and special pieces such as internal and external corners, end caps and joints make **PROJOLLY** a much sought-after and elegant profile that allows a workmanlike application.

# PROJOLLY

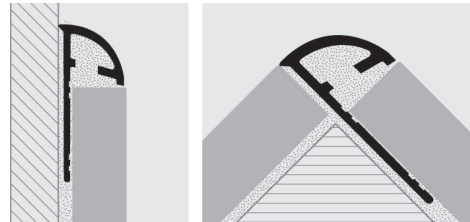
POLISHED ALUMINIUM  
CHROME AND TITANIUM



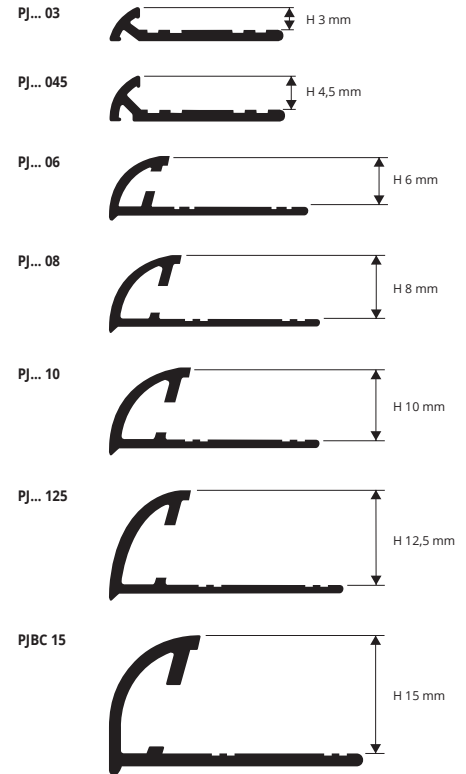
POLISHED ALUMINIUM (chrome-titanium)  
thermo packed - bar length 2,7 lm - pack. 40 Pcs - 108 lm (H 15 mm - 54 lm)

Article	H mm		
PJBC 03	3		
PJBC 045	4,5		
PJBC 06	6		
PJBC 08	8		
PJBC 10	10		
PJBC 125	12,5		
PJBC 15	15		
PJBT 08	8		
PJBT 10	10		
PJBT 125	12,5		

### EXAMPLES AND INSTRUCTIONS FOR LAYING METHODS



1. Choose "PROJOLLY" according to the tile thickness and desired finish.
2. Cut "PROJOLLY" to the desired length and apply the adhesive on the support where the profile will be laid.
3. Press the anchoring flange of "PROJOLLY" into the adhesive.
4. Lay the tiles, aligning them with the profile leaving a 2 mm joint. Remove immediately all remains of adhesive from the surface of the profile.
5. Fill the joints between the profile and the tiles with grout, in order to avoid water stagnation. Remove immediately all the remains of grout from the surface of the profile.



### COLOURS



**ITEM AVAILABLE WHILE STOCKS LAST.**

## CAPSULES, END CAPS and THREE-WAYS JOINTS

POLISHED ALUMINIUM (chrome, titanium) / PLASTIC

Capsules & end caps of the on demand profiles are also on demand \*

### JOINTS - PLASTIC

Article	H mm		
GJJA .../...	06/08/10/ 125/15		

Choose the desired pack. & height  
Ex.: 10 mm joint in 10 Pcs Pack - GJJA 10/10



### EXTERNAL CAPSULES



### INTERNAL CAPSULES



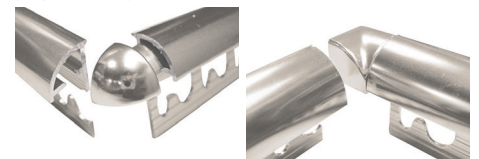
### LEFT CAPSULES POLISHED ALUMINIUM

Article	H mm		
CPJBC .../...	06/08/10/125		
CPJBC 15/...	15		
IPJBC .../...	06/08/10/125		
IPJBC 15/...	15		
TPJBC .../...	06/08/10/125/15		
CPJBO .../...	06/08/10/125		
IPJBO .../...	06/08/10/125		
TPJBO .../...	06/08/10/15		
CPJBR .../...	08/10/125		
IPJBR .../...	08/10/125		
TPJBR .../...	08/10/125		
CPJBT .../...	08/10/125		
IPJBT .../...	08/10/125		
TPJBT .../...	08/10/125		
CPJBN .../...	08/10/125		
IPJBN .../...	08/10/125		
TPJBN .../...	08/10/125		

Choose the desired pack. & height  
Ex.: 4,5 mm capsule in 10 Pcs Pack - CPJBC 10/10

(\* ) 12,5/15 mm NOT SUITABLE FOR THREE-WAYS CORNER

The right capsules are available on demand and must be used only in the following cases:  
A) when you are laying the cut base of the profile perpendicularly on the floor;



Add "D" to the article code. For example: CPJDBC 06. Add "D" to the article code. For example: IPJDBC 06.

B) as an alternative to end-caps (right side).

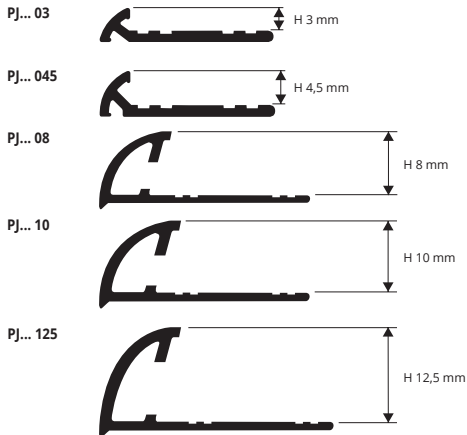


LEFT CAPSULES RIGHT CAPSULES  
Add "D" to the article code. For example: CPJDBC 06.

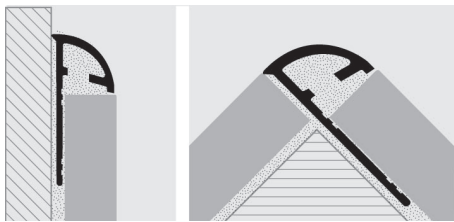
# PROJOLLY

## BRUSHED ALUMINIUM

**PROJOLLY** is a rounded bead profile in brushed aluminium that can be applied on external corners of coverings. It can be used to close the perimeter of coverings and like a connection profile between step tread and riser of stairs coated with ceramic or natural stone tiles. Its particular section and elegance, the availability in four different finishes and special pieces such as internal and external corners, end caps and joints make **PROJOLLY** a much sought-after and elegant profile that allows a workmanlike application.



### EXAMPLES AND INSTRUCTIONS FOR LAYING METHODS



1. Choose "PROJOLLY" according to the tile thickness and desired finish.
2. Cut "PROJOLLY" to the desired length and apply the adhesive on the support where the profile will be laid.
3. Press the anchoring flange of "PROJOLLY" into the adhesive.
4. Lay the tiles, aligning them with the profile leaving a 2 mm joint. Remove immediately all remains of adhesive from the surface of the profile.
5. Fill the joints between the profile and the tiles with grout, in order to avoid water stagnation. Remove immediately all the remains of grout from the surface of the profile.



**BRUSHED POLISHED ALUMINIUM (silver)**  
thermo packed - bar length 2,7 lm - pack. 40 Pcs - 108 lm

Article	H mm		
PJBS 03	3		
PJBS 045	4,5		
PJBS 08	8		
PJBS 10	10		
PJBS 125	12,5		

**BRUSHED POLISHED ALUMINIUM (titanium)**  
thermo packed - bar length 2,7 lm - pack. 40 Pcs - 108 lm

Article	H mm		
PJTS 03	3		
PJTS 045	4,5		
PJTS 08	8		
PJTS 10	10		
PJTS 125	12,5		



### COLOURS



**ITEM AVAILABLE WHILE STOCKS LAST.**

## CAPSULES, END CAPS and THREE-WAYS JOINTS

\* Capsules & end caps of the on demand profiles are also on demand

BRUSHED POLISHED ALUMINIUM (silver, titanium) / PLASTIC

### LEFT CAPSULES - BRUSHED POLISHED ALUMINIUM

silver-titanium

Article	H mm		
CPJBS .../...	08/10/125		
IPJBS .../...	08/10/125		
TPJBS .../...	08/10/125		
CPJTS .../...	08/10/125		
IPJTS .../...	08/10/125		
TPJTS .../...	08/10/125		

Choose the desired pack. & height  
Ex.: 4,5 mm capsule in 10 Pcs Pack - CPJBS 10/10

### JOINTS - PLASTIC

Article	H mm		
GJJA .../...	08/10/125		

Choose the desired pack. & height  
Ex.: 10 mm joint in 10 Pcs Pack - GJJA 10/10

#### EXTERNAL CAPSULES

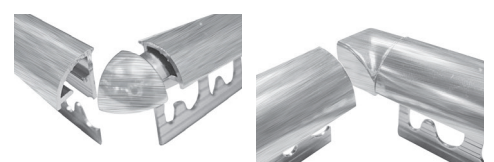


#### INTERNAL CAPSULES



The right capsules are available on demand and must be used only in the following cases:

A) when you are laying the cut base of the profile perpendicularly on the floor;



Add "D" to the article code. For example: CPJDBS 08.

Add "D" to the article code. For example: IPJDBS 08.

B) as an alternative to end-caps (right side).



#### LEFT CAPSULES

Add "D" to the article code. For example: CPJDBS 08.

#### RIGHT CAPSULES

#### END CAP



TPJ... /.../...

#### JOINT



GJJA .../...

\* = Production on demand with minimum quantity of 100 pcs. Production delay 4/5 weeks. Price to be agreed

**PROJOLLY** is a rounded bead profile in varnished aluminium that can be applied on external corners of coverings. It can be used to close the perimeter of coverings. Its particular section and elegance, the availability in five different colours and special pieces such as internal and external corners, end caps and joints make **PROJOLLY** a much sought-after and elegant profile that allows a workmanlike application.

# PROJOLLY

VARNISHED ALUMINIUM

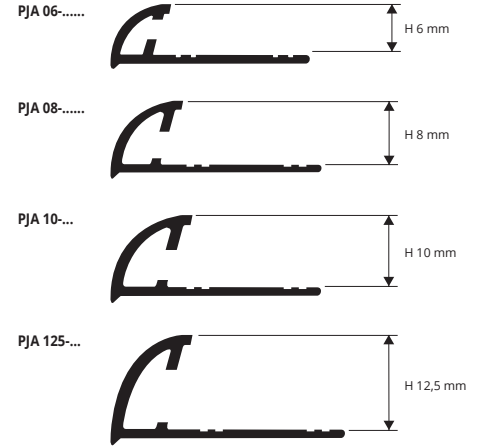


VARNISHED ALUMINIUM (HOT-WORKED 200°) thermo packed bar length 2,7 lm - pack. 20 Pcs-54 lm (colour white 40 Pcs - 108 lm)

Article	H mm		
PJA 06-01	6		
PJA 08-...	8		
PJA 10-...	10		
PJA 125-01	12,5		

With H 8 and 10 mm available in the colours: 01 - 0106 - 0311 - 06 - 11  
Available on demand: 010 - 02-03-0211-10-17.  
The code of the selected colour must be added to the article code.  
E.g.: PJA 08... (chosen colour white) PJA 08-01.

On demand may be realised in other finishes of the colour chart. Contact our customer service for minimal quantity, timing and price.



## COLOURS

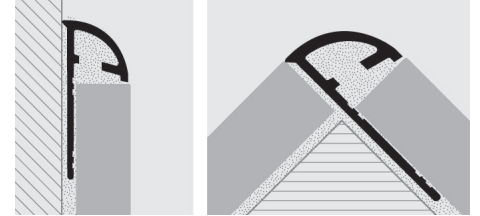
01 - Varnished white alum. (9016)	0106 - Varnished white Ivory alum. (9001)	11 - Varnished black alum. (9005)

AVAILABLE MINIMUM QUANTITY 100 PCS by colour and height  
(Price to be agreed. Production delay 4/5 weeks)

010 - Varnished white matt alum. (9016)	02 - Varnished light grey alum. (7035)	03 - Varnished stone grey alum. (7030)
0211 - Varnished quartz grey alum. (7039)	10 - Varnished klinker red alum. (8004)	17 - Varnished bahama beige alum.
0311 - Varnished asphalt grey alum. (7043)	06 - Varnished ivory alum. (1015)	

ITEM AVAILABLE WHILE STOCKS LAST.

## EXAMPLES AND INSTRUCTIONS FOR LAYING METHODS



1. Choose "PROJOLLY" according to the tile thickness and desired colour. 2. Cut "PROJOLLY" to the desired length and apply the adhesive on the support where the profile will be laid. 3. Press the anchoring flange of "PROJOLLY" into the adhesive. 4. Lay the tiles, aligning them with the profile leaving a 2 mm joint. Remove immediately all remains of adhesive from the surface of the profile. 5. Fill the joints between the profile and the tiles with grout, in order to avoid water stagnation. Remove immediately all the remains of grout from the surface of the profile.

## CAPSULES, END CAPS and THREE-WAYS JOINTS

VARNISHED ALUMINIUM / PLASTIC

Capsules & end caps of the on demand profiles are also on demand \*

### LEFT CAPSULES VARNISHED ALUMINIUM (HOT-WORKED 200°)

Article	H mm		
CPJA .../.../...	08/10/125		
IPJA .../.../...	08/10/125		
TPJA .../.../...	08/10/125		

Choose the desired pack & height  
Ex.: 4,5 mm capsule in 10 Pcs Pack - CPJA 10-06/10 10/10

#### EXTERNAL CAPSULES



CPJA... /.../...



CPJDA... /.../...

#### INTERNAL CAPSULES



IPJA... /.../...



IPJDA... /.../...

### JOINTS - PLASTIC

Article	H mm		
GJJA .../...	08/10/125		

Choose the desired pack & height  
Ex.: 10 mm joint in 10 Pcs Pack - GJJA 10/10

#### END CAP



TPJA... /.../...

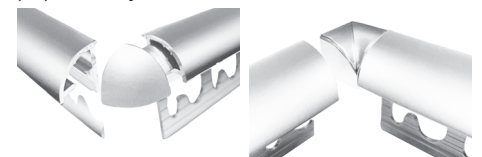
#### JOINT



GJJA .../...

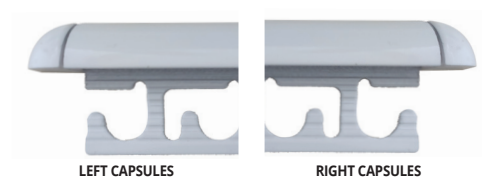
The right capsules are available on demand and must be used only in the following cases:

A) when you are laying the cut base of the profile perpendicularly on the floor;



Add "D" to the article code. For example: CPJDA 06-01. Add "D" to the article code. For example: IPJDA 06-01.

B) as an alternative to end-caps (right side).



LEFT CAPSULES

RIGHT CAPSULES

Add "D" to the article code. For example: CPJDA 06-01.